



MIT E

MMC Institute for Teaching Excellence

"To promote excellence in medical education in Maine"

mitemmc.org

Year In Review, 2019



Maine Medical Center
MaineHealth

centered around you

TABLE OF CONTENTS:

Letter from the Director	3
MITE at a Glance	4
Academy at MITE	5
Stories from the Academy	6
Academy Achievements	8
2019-2021 Incoming Scholars	13
MITE Awards and Grants	14
New Programs in 2019	15
Looking Ahead to 2020	16



MESSAGE FROM THE CO-DIRECTOR



Robert Bing-You, MD, MEd, MBA,
FACP

Dear Colleagues,

We are pleased to present the annual report for the MMC Institute for Teaching Excellence. This past year has seen the continuation of popular programs (e.g., Annual Faculty Development conference, Canvas Best Practices in Manuscript Peer Reviewing), as well as the start of new programs (e.g., Senior Clinician Engagement Program). The Educational Innovation grants continue to support novel and innovation approaches to education. It is hard to believe that MITE has been become such a well-recognized faculty development system since it began in 2015.

The MITE Academy has grown in size, and I am pleased MITE is much more interprofessional in programming as well as Academy membership. I wish to recognize the tremendous support of MITE by the Department of Medical Education staff (Sue, Kelley-Anne, Katy), and also the Academy and other faculty members who are the real horsepower of our programs. We look forward to the upcoming year with new ideas and success!

A handwritten signature in cursive script that reads "Robert Bing-You".

Vice President for Medical Education, MMC
Professor, Tufts U. School of Medicine

4

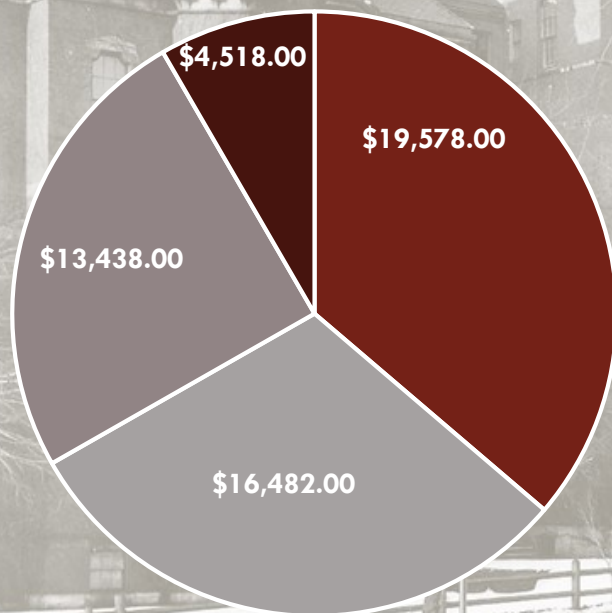
ANNUAL
TEACHING
AWARDS

6

Senior
Academic
Promotions
in 2019

MITE AT A GLANCE

**\$54,016 in 2019 Education
Innovations Grant Funding**



- **Monthly Medical Education Pearls and QI/PS Hot Topics**
- **Resources for TUSM Academic Appointment and Promotion**
- **Opportunities to Participate in Scholarly Activity**
- **Teaching Opportunities for Interprofessional Faculty**

16 certificates, workshops, programs and conferences

49 members of the Academy at MITE

What is the Academy at MITE?

The Academy was founded in 2016 as part of the Maine Medical Center (MMC) Institute for Teaching Excellence (MITE). Its first Mission and Vision statements were developed by the Academy members at the winter 2017 meeting.

Mission:

The mission of the Academy at MITE is to develop, promote, and recognize excellence in teaching throughout the continuum of medical education.

Vision:

The Academy will transform the MMC academic environment and culture to establish MMC as a national leader in medical education

Leadership

Robert Bing-You, MD, MEd, MBA
Elizabeth Sue Rose, MPH
Denham Ward, MD

Master Educators

Peter Bates, MD
Robert Big-You, MD, MEd, MBA
Jo Linder, MD
Douglas Sawyer, MD
John Tooker, MD,
Robert Trowbridge, MD
Denham Ward, MD
James Whiting, MD
Marjorie Wiggins, DNP, MBA, RN, FAAN, NEA-BC
Elizabeth Wilson, MD, MPH, MS-HPed

Fellows

Erin Belfort, MD
Frank Chessa, PhD
Wendy Craig, PhD
John Erickson, MD, FACP
Kathleen Fairfield, MD, MPH, DrPH
Gilles Fraser, BS Pharm, PharmD
Carl Germann, MD
Sarah Hallen, MD
Vicki Hayes, MD
Christina Holt, MD
Lucy Liaw, PhD
Casey MacVane, MD, MPH
Leah Mallory, MD
Sarah Nelson, MD, FACEP
Mary Ottolini, MD
Andrew Perron, MD
Alison Samitt, MD
David Seder, MD
Daniel Spratt, MD
Tania Strout, PhD, RN, MS
Thomas Van der Kloot, MD
Kalli Varaklis, MD

Graduate Scholars

Sanjeev Francis, MD
Elizabeth Herrle, MD
Carly McAteer, MD
Kathleen McGarr, MD
Tamara Palka, MD
Christopher Turner, MD

Scholars

Eric Brown, MD
Ruth Frydman, MD
Jillian Gregory, DO
Jason Hine, MD
Rebecca Hutchinson, MD
Angela Leclerc, PA-C, MS
Thomas Reynolds, DO
William Sauer, MD
Jeffrey Walawender, DDS



The Academy at MITE

Stories from the Academy:

“It’s hard to convince people to go through the laborious Tufts promotions process when our home institution doesn’t place value on it. MITE’s engagement in the process (presentations to leadership and hands-on workshops for faculty) has really helped me to move the dial with my faculty. I have many more faculty in the promotions pipeline than I did before MITE took this on as a priority.

“I have been wanting to start departmental grand rounds for the past two years, but there were always barriers to implementation. MITE’s clear commitment to interprofessional education and their implementation of easy-to-use CME has made my dream a reality.”

-Elisabeth Wilson, MD, Chair of Family Medicine at Maine Medical Center



“I honestly cannot believe I was considering creating a postgraduate APP program without the mentorship of the Academy and fellow scholars. The bimonthly lectures series, discussions and project feedback are incredibly valuable. These sessions have assisted me with my scholar project and with the day to day clinical bedside teaching of students, residents and fellows in the neuro ICU as well as didactic teaching at our local PA program at UNE.

“The Academy has piqued my curiosity in education theory, techniques and research. This is a small portion of a long journey to come. I am grateful for the opportunity to be a part of a respected Academy and am looking forward to continued involvement in the Academy in the years to come.”

-Angela Leclerc, PA-C

The Academy at MITE



“When I was first approached regarding applying for MITE fellowship, I was unfamiliar with the Academy, and not immediately convinced of why I would want to be a member. Having now been part of the Academy for a few years, I recognize its value for me personally, as well as for the academic environment and mission of Maine Medical Center.

I appreciate having a closer connection to an interprofessional group of similarly-minded clinician-educators and researchers, which participation in the Academy offers. Were it not for my involvement in MITE, I would not have made connection with important work being done by colleagues in clinical environments distant from my own. More importantly, I feel that the growth of MITE clearly represents the strong academic mission of our community, in a pragmatically meaningful as well as symbolically important manner. The Academy helps to validate our commitment to education and investigation, hopefully helping to guarantee institutional support for further growth.”

-Thomas Van der Kloot, MD

“Being a MITE scholar filled three important gaps for me. First, I had not trained at MMC and was not familiar with the networks of the hospital. My co-scholars were from multiple departments that I would not otherwise have had the opportunity to meet. I am happy now to bump into them frequently in the hallways. Denham, Bob and Sue were also present at most of the sessions. They were an excellent high-level resource to help me navigate the system and start developing educational research projects.

Second, MITE provided a firm foundation of [teaching] theory. I am now fluent in the differences between formative and summative assessment, active and passive learning, and more. I have also been introduced to many of the great educators locally and nationally who taught our classes.

Third, I now have access to resources for further development. My project as a scholar has developed into two grants and a poster presentation at a national meeting. I became a MITE fellow and will teach a class to the new scholars this Spring. I am thankful for that initial orientation event and grateful for my MITE education.”

-Christopher Turner, MD



The Academy at MITE

ACADEMY MEMBER ACHIEVEMENTS



Vicki Hayes, MD

- Publications and Posters:
 - Bing-You R, Ramani S, Ramesh S, **Hayes V**, Varaklis K, Ward D, Blanco M. The interplay between residency program culture and feedback culture: a cross-sectional study exploring perceptions of residents at three institutions. *Medical Education Online*. 2019; 24(1): 1611296.
- Presentations:
 - Regional: 2019, Lead on Workshop Presentation: "Helping students get the feedback they need: A workshop to explore effective feedback-seeking education". Mary Y Lee, MD, Medical Education Day, Boston, MA. 2019.
 - National: Overcoming a Red Flag: effectively advising students at high risk for an unsuccessful Match in Family Medicine. Symposium. Society of Teachers of Family Medicine Conference on Medical Student Education. Jacksonville, FL. Jan 2019.
 - Overcoming a Red Flag: effectively advising students at high risk for an unsuccessful Match in Family Medicine. Symposium. Society of Teachers of Family Medicine Conference on Medical Student Education. Jacksonville, FL. Jan 2019.
- Editorial:
 - Journal Reviewer for *Academic Medicine*
 - Acted as Associate Editor for JMMC
 - Served as TUSM CAP Course Director



Casey MacVane, MD

- Promoted to Associate Professor of Emergency Medicine, TUSM
- Case Report Publication:
 - Goddard H, MacVane CZ, Strout TD. Abdominal Pain After a Football Game. *Ann Emerg Med.* 2019; 73(3):315
- Published Abstracts:
 - Huyler A; MacVane CZ; Perron AD, Strout TD: Outpatient Treatment of Pulmonary Embolism: A Single-Center Case Series. *Academic Emergency Medicine.* Accepted, In press.
 - MacVane CZ; Perron AD: When Less is More: A Novel Strategy for Improving Resident Evaluations. *Western Journal of Emergency Medicine.* 2019; 20(4.s1): s3-4.
 - MacVane CZ; Baumann MR; Strout TD: Academic Promotion Workshop Series Enhances Emergency Physicians' Knowledge of and Experience with the Promotion Process. *Western Journal of Emergency Medicine.* 2019; 20(4.s1): s37-38.
- Regional Lecture: "Beyond Burnout: Physician Depression and Suicide." North Conway Memorial Hospital, February 2019.

- MITE Graduate Scholar
- Fellow, American College of Physicians
- Awards:
 - Excellence in Teaching Citation, Tufts University School of Medicine
 - Generalist Teacher of the Year Award, Internal Medicine Residency, Maine Medical Center
- Promoted to Assistant Professor, Tufts University School of Medicine
- New Role - Medical Director of Clinical Decision Support, MaineHealth Clinical Informatics
- Speaking Engagements:
 - Pechakucha - "Hidden, Unhidden and Explicit: What are You Teaching about Technology in Medicine," MITE Faculty Development Day
 - Oral Presentation - "Happy Beans, Happy Teams: Medication Ordering in Abnormal Renal Function," Epic Experts Group Meeting



Liz Herrle, MD

- Appointed Medical Director of the Hannaford Simulation Center in January 2019
- Elected to Executive Board of International Network for Simulation-based Pediatric Innovation, Research and Education (INSPIRE)
- Awards:
 - Residents Award - “General Pediatrician of the Year”
 - Maine Medical Center Annual Teaching Award - Given by pediatric residents to a single attending based on clinical practice, mentorship and teaching
- Publications:
 - Bismilla Z, Boyle T, Mangold K, VanIttersum W, While ML, Zaveri P, Mallory LA. Development of a Simulation-Based Interprofessional Teamwork Assessment Tool. Accepted for publication 2.11.19. Journal of Graduate Medical Education. (doi: 10.4300/JGME-D-18-00729.2)
 - Bunting S, Mallory L, Murray L. Pediatric Interfacility Transfers: Association of Pre-Transfer Vital Signs with Length of Stay at a Tertiary Care Center. Journal of the Maine Medical Center: Vol. 1: Iss. 1, Article 5



Leah Mallory, MD



Erin Belfort, MD

-
- February 2019: Distinguished Fellow of the American Academy of Child & Adolescent Psychiatry (AACAP)
 - National Presentations:
 - *For Better: Positive Aspects of Social Media for LGBTQ Youth*, Clinical Perspectives Chair of sessions and co-presenter at AACAP national meeting, October 2019—Chicago, IL;
 - *From physician-patient to physician-patient-family relationship*, Clinical Perspectives Life Members Wisdom invited co-presenter at AACAP national meeting, October 2019— Chicago, IL;
 - *Working Toward Family Acceptance with Families of Gender Diverse Youth*, Clinical Perspectives Chair of session and co-presenter at AACAP national meeting, October 2019— Chicago, IL.
 - Publication: Gansner M, Belfort E, Cook B, Leahy C, Colon-Perez A, Mirza D, Carson N. problematic Internet Use and Associated Self-Aggression and High-Risk Behavior in the Adolescent Clinical Sample: Results from a Survey of Psychiatrically Hospitalized Youth *Cyberpsychology, Behavior, and Social Networking* 2019 Mar 21.

- Elected Fellow of the MMC MITE Academy (2019)
- Elected Fellow of the American Heart Association - 3CPR Council (2018)
- Harvard Global Clinical Scholars Research Training Certificate Program
- Neurocritical Care Society Board of Directors– Re-elected to second term (2019-2023)
- Editorial:
 - Invited to join Editorial Board of *Neurocritical Care*
 - Currently serve on writing groups for the American Heart Association/ Neurocritical Care Society and European Society of Intensive Care Medicine:
 - AHA/NCS Consensus on ICU Care after Cardiac Arrest
 - ESICM Consensus on Management of the Respiratory System and Mechanical Ventilation in Patients with Acute Brain Injury
- International Lectures:
 - “Targeted Temperature Management” – Workshop Director. Neurocritical Care Society Annual Meeting. Vancouver, Canada. October, 2019
 - “Targeted Temperature Management” – Workshop Director. Neurocritical Care Society Annual Meeting. Vancouver, Canada. October, 2019
 - “Neurocardiac Risk Stratification 6 hours after resuscitation from Cardiac Arrest” - 4th International Symposium on Post Cardiac Arrest Care. Lund, Sweden. May 2019

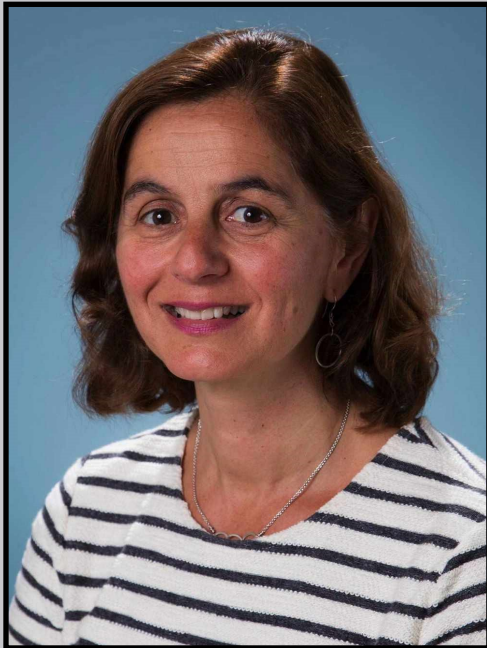


David Seder, MD

- Publication
 - El-Yafawi, Rama; Cantlin, Patricia; and Van der Kloot, Thomas E. (2019) "Increased 18F-FDG-PET Uptake in Granulomatosis with Polyangiitis: Case Report and Review of the Literature," *Journal of Maine Medical Center*. Vol. 1 : Iss. 1 , Article 10.
- Grant Activity:
 - Contributed to HRSA grant application for expansion of the Psychiatry residency program to a track at Pen bay Medical Center - Grant was funded for \$725,933.



Thomas E. Van der Kloot, MD



Kalli Varaklis, MD

Project lead for Maine Medical Center receiving the competitive “Re-imagining Residency” grant from the American Medical Association. Grant will expand the “Interprofessional Partnership to Advance Care and Education: iPACE” care model. Total amount funded \$1,925,000.

We welcome our 2019-2021 cohort of MITE Scholars



2019-2021 MITE Scholars: (L to R): Ruth Frydman, Jeffrey Walawender, Eric Brown, Jillian Gregory and Thomas Reynolds

2019-2021 Scholars

Ruth Frydman, MD – *Psychiatry*

Jeffrey Walawender, DDS – *Dentistry*

Eric Brown, MD – *Anesthesiology*

Jillian Gregory, DO – *Pediatrics*

Thomas Reynolds, DO – *Pediatrics*

The MMC Institute for Teaching Excellence (MITE) Academy Scholar program continues with a new Scholars cohort September 2019. The aim of the MITE scholar program is to support a small number of faculty, to develop skills in clinical and didactic teaching as well as educational scholarship non-clerkship teaching and faculty development.

Five clinicians from across MMC Clinical departments were selected through a competitive application pool as Teaching Scholars. Appointments as a MITE Scholar are two years in length. Scholars attend bi-monthly faculty development seminars, complete a scholarly project and participate in peer observation of teaching.

2019 MITE TEACHING AWARDS



Ghassan Saleh, DMD, MS

**MITE Interprofessional Award
for Teaching Excellence**



**Interprofessional Partnership to
Advance Care and Education**

The iPACE Team: Laurie Burton, RN, BSN, Christyna McCormack, Dan Meyer, MD, Carrie Peoples, RN, Lisa

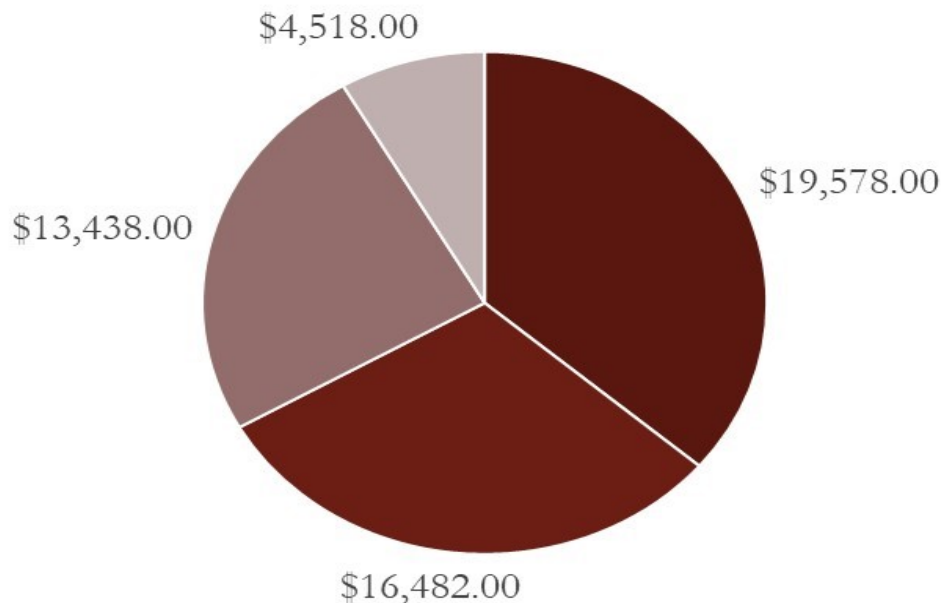
**MITE Award for Innovation in
Teaching**



Christina Holt, MD

**MITE Award for Educational
Leadership & Mentorship**

2019 Education Innovations Grants Awarded



- Distance Learning with ECHO Teledermoscopy, PI: Elizabeth V. Seiverling MD, Maine Medical Partners Dermatology
- Developing & pilot testing training materials for residents and fellows for best practices for quality improvement and healthcare delivery science, PI: Kathleen Fairfield, MD, MPH, DrPH, Division of Applied Healthcare Delivery Science, Department of Medicine
- Multimodal evaluation of an inter-professional communication skills training, PI: Rebecca Hutchinson, MD, Hospice and Palliative Medicine
- Implementation of a Spaced Learning Application for General Surgery Residents, PI: Christopher Turner MD, MPH, Assistant Program Director General Surgery



The Education Innovations Grants is a competitive pilot grant program, to improve community health & the delivery of healthcare in Maine. The program seeks to enhance UME, GME & CME programs. It is open to MMC community and affiliates; cross-disciplinary proposals; mentors for junior faculty or trainees.



Maine Medical Center Institute for Teaching Excellence (MITE) Clinical Teaching Certificate



Description

The MITE Clinical Teaching Certificate is delivered online with MMC's Canvas® Learning Management System. The certificate is intended for educators in the clinical setting, regardless of background, type and/or level of learner (e.g., medical students, social work students, residents, etc.). The curriculum consists of 9 required modules led by a subject matter expert in the MMC Department of Medical Education. There is no cost associated with enrolling into the certificate.

- **Presentation Skills** (Vicki Hayes, MD)
- **Learning Climate** (Bob Browbridge, MD)
- **Setting Goals & Expectations** (Bob Bing-You, MD, MEd, MBA)
- **Teaching & Assessing Competencies** (Carl Germann, MD, MHPH)
- **Time Efficient Teaching** (Bob Browbridge, MD)
- **Feedback** (Bob Bing-You, MD, MEd, MBA)
- **Small Group Teaching** (Tom Van der Kloot, MD)
- **Teaching Adult Learners** (Kalli Varaklis, MD, MSEd)
- **Final Teaching Portfolio** (Tania Strout, PhD, RN, MS)

Curriculum & Evaluation

Completion of the certificate is completely online and self-paced. Each individual module will take up to 2 hours to complete. Curricular content includes short videos by subject matter experts at MMC, peer-reviewed literature, worksheets, infographics, quizzes, teaching exercises, case studies and reflective exercises. Feedback and grading of submissions is done via Canvas® throughout the duration of the program by MMC subject matter experts in each content area. Upon completion of the certificate, participants will receive a MITE Clinical Teaching Certificate from the Department of Medical Education at MMC. It is recommended to complete the certificate within 1 year upon starting.

Goals

- Improve the quality and depth of teaching skills of faculty
- Increase the knowledge/skills and professional satisfaction of faculty in their important role as teachers
- Develop faculty with teaching expertise in specific themes

Benefits

- Recognition for enhancing teaching skills
- CME credit for participation in activities
- Stepping stone to further advancement in educational or administrative roles
- Contributes to TUSM faculty appointment and promotion

Improve Your Teaching Portfolio

The final module involves preparing your curriculum vitae and a teaching portfolio for submission for an academic appointment or promotion to Tufts University School of Medicine.

Get CME & MOC Part II Credits

Maine Medical Center is accredited by the Maine Medical Association's Committee on Continuing Medical Education (CME) to physicians. Maine Medical Center designates this educational activity for a maximum of 20 AMA PRA Category 1 Credit(s)™. Physicians should only claim credit commensurate with the extent of their participation in the activity.

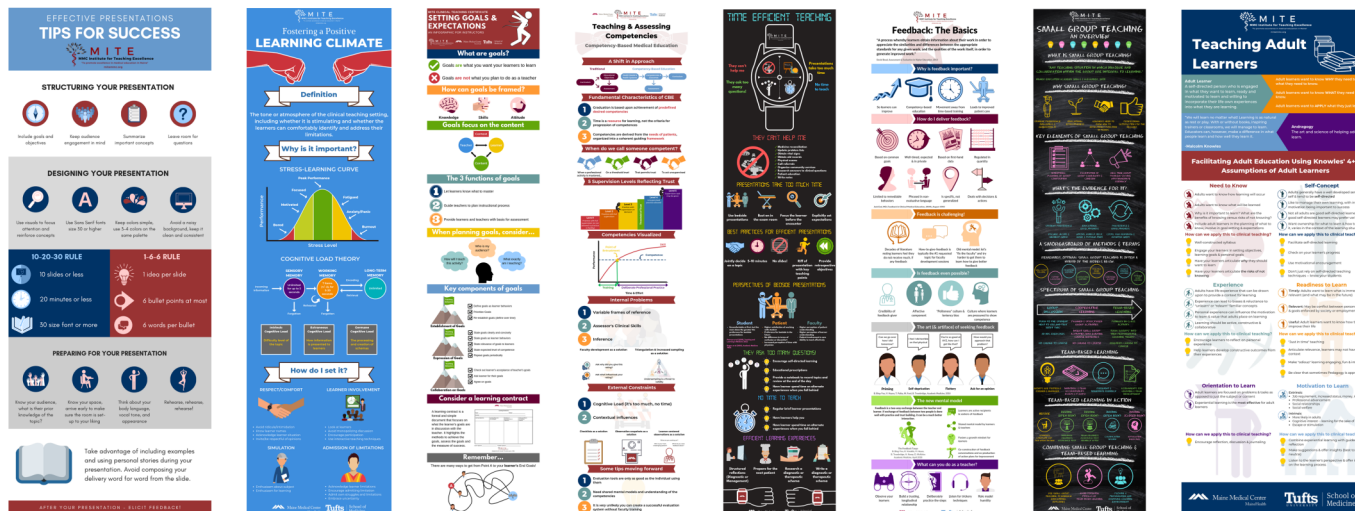
Successful completion of this CME activity, which includes participation in the evaluation component, enables the participant to earn up to 20 MOC Part II points in the American Board of Internal Medicine's (ABIM), American Board of Pediatrics (ABP) and American Board of Anesthesiology (ABA) Maintenance of Certification (MOC) programs. Participants will earn MOC points equivalent to the amount of CME credits claimed for the activity. It is the CME activity provider's responsibility to submit participant completion information to ACCME for the purpose of granting MOC credit.



New to MITE This Year...

- Asynchronous Clinical Teaching Certificate
- Teaching Opportunity Listings
- Intern Intake Form
- Redesigned Promotions page
- Promotions Office hours
- Monthly QI/PS Hot Topics

Curriculum-at-a-Glance



Looking Ahead to Academic Year 2020-2021...

MITE Faculty
Development
Seminars to Go



Scholarly Project
Support Intake Form
and Catalogue



2020-2021 MITE Grand Rounds



9th Faculty Development Conference

featuring Carol Bates, MD, *Harvard Medical School*

JANUARY	FEBRUARY	MARCH	APRIL
Mo Tu We Th Fr Sa Su 1 2 3 4 5 6 7 8 9 10 11 12 13 14 15 16 17 18 19 20 21 22 23 24 25 26 27 28 29 30 31	Mo Tu We Th Fr Sa Su 1 2 3 4 5 6 7 8 9 10 11 12 13 14 15 16 17 18 19 20 21 22 23 24 25 26 27 28 29	Mo Tu We Th Fr Sa Su 1 2 3 4 5 6 7 8 9 10 11 12 13 14 15 16 17 18 19 20 21 22 23 24 25 26 27 28 29 30 31	Mo Tu We Th Fr Sa Su 1 2 3 4 5 6 7 8 9 10 11 12 13 14 15 16 17 18 19 20 21 22 23 24 25 26 27 28 29 30
MAY	JUNE	JULY	AUGUST
Mo Tu We Th Fr Sa Su 1 2 3 4 5 6 7 8 9 10 11 12 13 14 15 16 17 18 19 20 21 22 23 24 25 26 27 28 29 30 31	Mo Tu We Th Fr Sa Su 1 2 3 4 5 6 7 8 9 10 11 12 13 14 15 16 17 18 19 20 21 22 23 24 25 26 27 28 29 30	Mo Tu We Th Fr Sa Su 1 2 3 4 5 6 7 8 9 10 11 12 13 14 15 16 17 18 19 20 21 22 23 24 25 26 27 28 29 30 31	Mo Tu We Th Fr Sa Su 1 2 3 4 5 6 7 8 9 10 11 12 13 14 15 16 17 18 19 20 21 22 23 24 25 26 27 28 29 30 31
SEPTEMBER	OCTOBER	NOVEMBER	DECEMBER
Mo Tu We Th Fr Sa Su 1 2 3 4 5 6 7 8 9 10 11 12 13 14 15 16 17 18 19 20 21 22 23 24 25 26 27 28 29 30	Mo Tu We Th Fr Sa Su 1 2 3 4 5 6 7 8 9 10 11 12 13 14 15 16 17 18 19 20 21 22 23 24 25 26 27 28 29 30 31	Mo Tu We Th Fr Sa Su 1 2 3 4 5 6 7 8 9 10 11 12 13 14 15 16 17 18 19 20 21 22 23 24 25 26 27 28 29 30	Mo Tu We Th Fr Sa Su 1 2 3 4 5 6 7 8 9 10 11 12 13 14 15 16 17 18 19 20 21 22 23 24 25 26 27 28 29 30 31

New Academic Affairs Calendar!